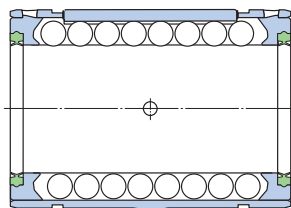
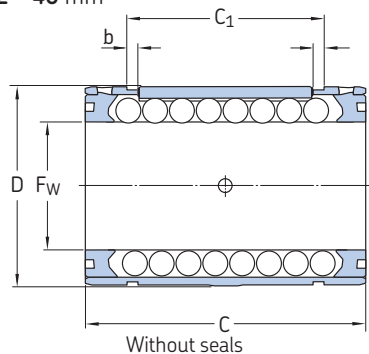


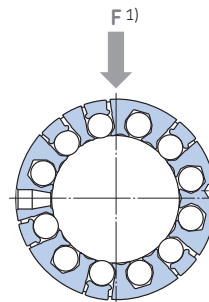
Linear ball bearings – LBCR .. D

Closed design

F_w 12 – 40 mm



With 2 double lip seals



Dimensions						Basic load ratings				Mass	Designations	
F _w	D	C	C ₁	b	No. of ball rows	dynamic		static			Linear ball bearing without seals	with 2 double lip seals
						C _{min}	max	C _{0 min}	max			
mm						N				kg	–	
12	22	32	22,6	1,3	5	930	1 370	695	1 120	0,02	LBCR 12 D	LBCR 12 D-2LS
16	26	36	24,6	1,3	5	1 080	1 600	800	1 290	0,026	LBCR 16 D	LBCR 16 D-2LS
20	32	45	31,2	1,6	6	2 200	3 250	1 630	2 650	0,056	LBCR 20 D	LBCR 20 D-2LS
25	40	58	43,7	1,85	6	3 100	4 550	2 360	3 800	0,108	LBCR 25 D	LBCR 25 D-2LS
30	47	68	51,7	1,85	6	4 800	7 100	3 550	5 700	0,122	LBCR 30 D	LBCR 30 D-2LS
40	62	80	60,3	2,15	6	7 650	11 200	5 100	8 300	0,205	LBCR 40 D	LBCR 40 D-2LS

¹⁾ Direction for max. load ratings

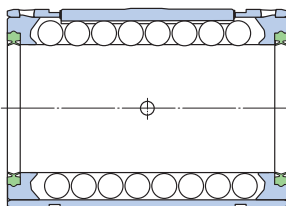
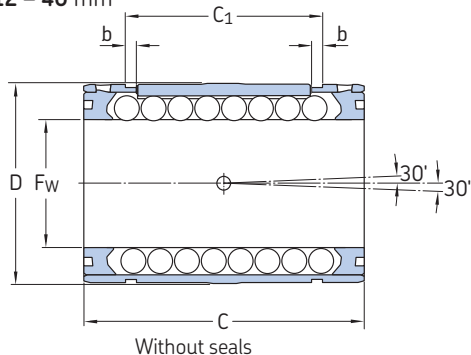
Upon request, these bearings are available in stainless steel version, identified by a HV6 suffix in the designation, e.g. LBCR 20 D-2LS/HV6

Linear ball bearings are available with double lip seal on one side only (seal located on the right side of the bearing - marked with the SKF logo on the cage). Designation example: LBCR 20 D-LS

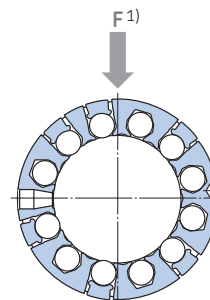
Linear ball bearings – LBCD .. D

Self-aligning closed design

F_w 12 – 40 mm



With 2 double lip seals



Dimensions						Basic load ratings				Mass	Designations	
F _w	D	C	C ₁	b	No. of ball rows	dynamic		static			Linear ball bearing without seals	with 2 double lip seals
						C _{min}	max	C _{0 min}	max			
mm						N				kg	–	
12	22	32	22,6	1,3	5	800	1 220	570	930	0,02	LBCD 12 D	LBCD 12 D-2LS
16	26	36	24,6	1,3	5	950	1 400	655	1 060	0,025	LBCD 16 D	LBCD 16 D-2LS
20	32	45	31,2	1,6	6	1 730	2 550	1 120	1 800	0,055	LBCD 20 D	LBCD 20 D-2LS
25	40	58	43,7	1,85	6	2 600	3 800	1 430	2 320	0,106	LBCD 25 D	LBCD 25 D-2LS
30	47	68	51,7	1,85	6	3 800	5 600	2 320	3 750	0,120	LBCD 30 D	LBCD 30 D-2LS
40	62	80	60,3	2,15	6	6 550	9 650	3 350	5 700	0,200	LBCD 40 D	LBCD 40 D-2LS

¹⁾ Direction for max. load ratings

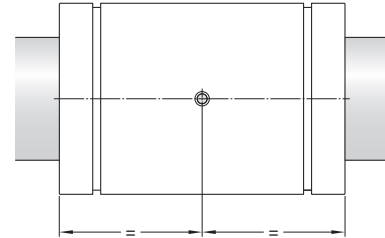
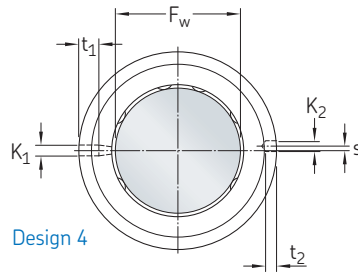
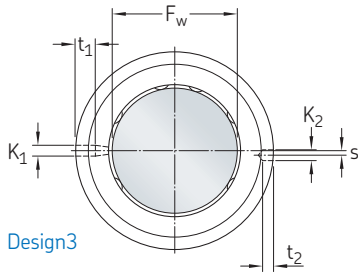
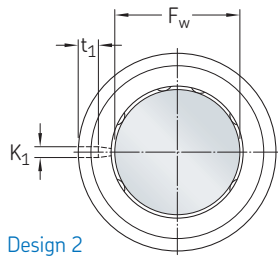
Upon request, these bearings are available in stainless steel version, identified by a HV6 suffix in the designation, e.g. LBCD 20 D-2LS/HV6

Linear ball bearings are available with double lip seal on one side only (seal located on the right side of the bearing - marked with the SKF logo on the cage). Designation example: LBCD 20 D-LS

Axial and rotational fixation – LBC, D series

Closed design

F_w 12 – 40 mm



Dimensions						Design	Appropriate grease fittings ¹⁾	Grub screws ²⁾	Pins ³⁾ Diameter
F _w	K ₁ ⁴⁾	t ₁	K ₂ ⁵⁾	t ₂	s				
mm						–	–		mm
12	3,0	2,6	–	–	–	2	VN-LHC 20	M 4	3
16	3,0	2,6	–	–	–	2	VN-LHC 20	M 4	3
20	3,0	2,6	–	–	–	2	VN-LHC 20	M 4	3
25	3,5	4,5	3,0	1,4	1,5	3	VN-LHC 40	M 5	3,5 / 3
30	3,5	4,5	3,0	2,3	2	4	VN-LHC 40	M 5	3,5 / 3
40	3,5	4,5	3,0	2,7	1,5	4	VN-LHC 40	M 5	3,5 / 3

¹⁾ Recommendations for holes to take grease fittings: → page 15

²⁾ Grub screws according to DIN EN 27435 or DIN EN ISO 4028.

³⁾ Straight pins according to DIN EN ISO 2338, slotted pins - DIN EN ISO 8752 or grooved pins - DIN EN ISO 8739 and DIN EN ISO 8744.

⁴⁾ For relubrication as well as location of linear bearing in SKF housings.

⁵⁾ Alternative bore hole for location in specific housings from other manufacturers.